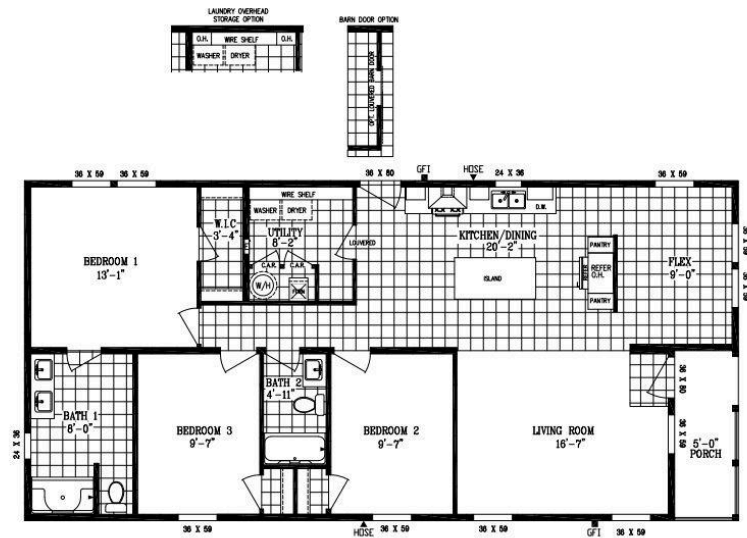


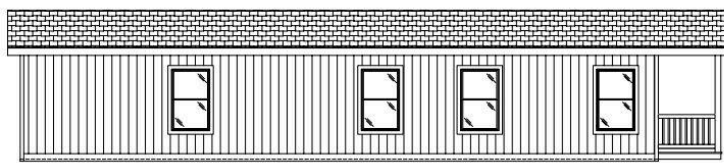
# The Tempo Stayin' Alive

3 Bedrooms | 2 Bathrooms | 1,414 sq ft

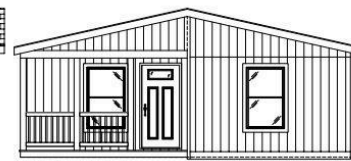
TEMPO  
STAYIN ALIVE  
TPO28563P  
26'-8" x 56'-0"  
APPROX 1,493 SQ. FT.



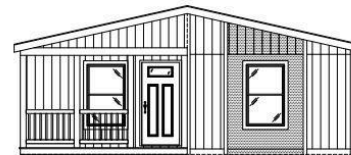
TEMPO  
STAYIN ALIVE  
55TMP28563CH  
26'-8" x 56'-0"  
APPROX 1,493 SQ. FT.



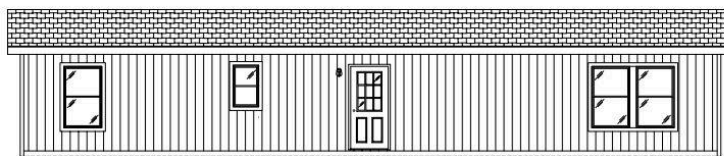
FRONT SIDEWALL



FRONT ENDWALL



OPTIONAL UPGRADED  
HITCH END ELEVATION



REAR SIDEWALL



REAR ENDWALL

# The Tempo Stayin' Alive

3 Bedrooms | 2 Bathrooms | 1,414 sq ft

## STANDARD FEATURES

- ✓ 8' Tall Ceilings
- ✓ LP SmartSide Panel Siding with 5/50 Year Warranty
- ✓ Weather Resistant House Wrap Under Siding
- ✓ Sherwin Williams Paint, both Interior and Exterior
- ✓ Tape and Texture Drywall with Square Corners
- ✓ 2" x 6" Exterior Walls Tempo
- ✓ Energy Star Rated Home
- ✓ Hardwood Cabinets with 42" Tall Overhead Cabinets
- ✓ 6" Recessed LED Lighting
- ✓ Ceiling Fan Ready in Living Room and Bedrooms
- ✓ Fiberglass Tubs and Showers
- ✓ Stainless Steel Appliances featuring 18 cu. ft. Top Freezer
- ✓ Pfister Faucets Throughout featuring Stainless Steel Pull Down in Kitchen Faucet
- ✓ 36" Stainless Steel European Range Hood Tempo
- ✓ Congoleum LUX Vinyl Flooring
- ✓ Shaw 25 ounce Stain Resistant Carpet
- ✓ Kwikset Door Hardware featuring Thumbblatch Front Door
- ✓ Architectural Shingles with Lifetime Warranty (Limited)
- ✓ Programmable ecoBee Smart Thermostat
- ✓ Carrier SmartComfort Electric Furnace

## MOST POPULAR UPGRADES

- ✓ 80 Lb. Roof Load for high snow areas
- ✓ 2" Blinds
- ✓ 50 Gallon Water Heater
- ✓ Carrera Marble Palisade Walk In Shower
- ✓ Wire and Prep for a Heat Pump
- ✓ 27.4 Cu. Ft. Stainless, Side by Side Refrigerator

# The Tempo Stayin' Alive

3 Bedrooms | 2 Bathrooms | 1,414 sq ft

## Photo Gallery



Photo 1



Photo 2



Photo 3



Photo 4

# The Tempo Stayin' Alive

3 Bedrooms | 2 Bathrooms | 1,414 sq ft



Photo 5



Photo 6